

Elevator Mechanical Installation Reference

Professional Elevator Packaging Solution Supplier



Tailoring Your Elevator



Unload container at job site



Empty Shaft



Install bottom beam after one piece of guide rail installed



Install post beams



Install cabin flooring



Install up beam and sheave





Install wood plate for temporary use, easy for shaft installation



Machine room hole opening



Machine installation





Install controller



Hoisting CW frame



Install steel rope



Machine steel rope installed





Steel rope and travelling cable appear inside shaft



Elevator can run after COP fixed



Fix hoisting machine for guide rails lifting/installation purpose



Drill hole before fixing cabin guide rails

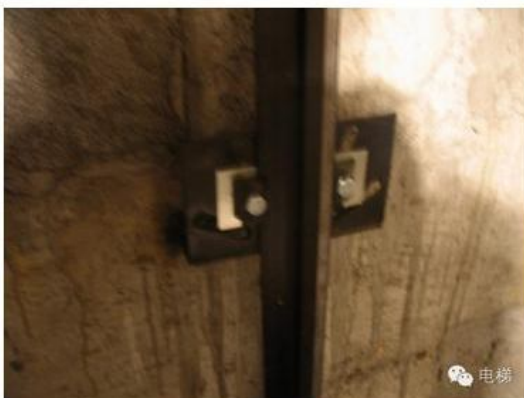




Fixing rail supports



Fixing brackets (with self-made ruler)



Welding guide rails



Install upper piece of guide rail





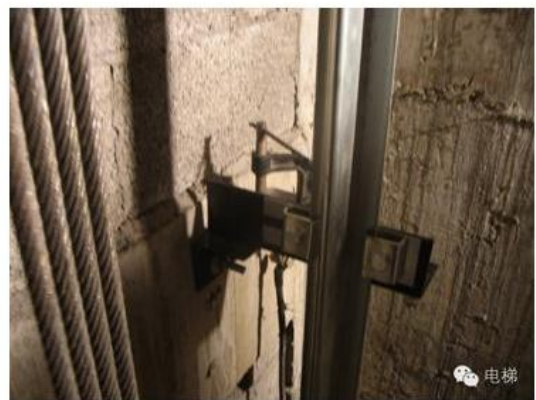
Drilling hole for CW rails



Fix CW rail support



Fixing CW rail brackets



Adjust and weld

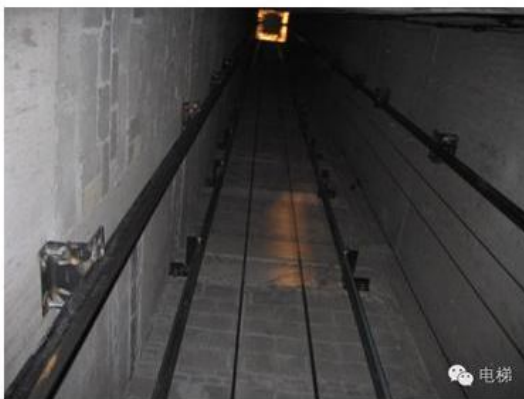




Guide rails installed



Fixing travelling cable on top of shaft



Shaft with guide rails installed



CW frame





Doors&Jambs fixed



Doors installed



Boxless HOP cable hole



HOP fixed





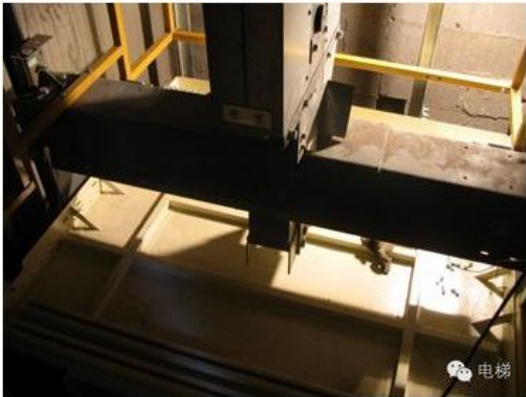
Fix cabin (Hoisting cabin frame)



Fixing cabin wall outside of shaft

Fix cabin inside shaft





Fixing cabin TOP



Adjust cabin and finish cabin fixing



Cabin installation finish



Install door operator





Thanks!

Suzhou Asia Fuji Elevator Co., Ltd
Add: Locca Buidling, Xiandai Road, SIP, Suzhou, China
P.C:215000

Tel: 0086-512-67901358
Fax: 0086-512-67901358
E-mail: info@asiafuji-china.com